

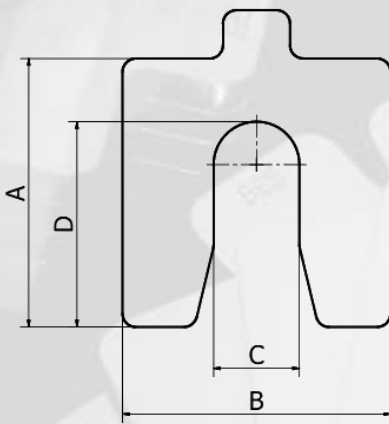


# Budget Engineering Services CC

Manufacturing of pre cut shim since 2002

## Pre-cut, slotted shims in metric

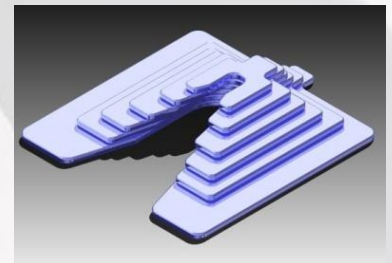
An essential part of any professional alignment and leveling task. They're accurate and easy to use. Manufactured from 300 series stainless steel. Each shim de-burred and permanently marked (etched) with thickness. No costly material wastage. No time consuming hand-cutting. No sharp edges. Neatly packaged in flip-open, carton box (packet of 10 each). Standard thickness ex-stock.



mm	A	B	C	D
50	50	50	16	39
75	75	75	22	55
100	100	100	32	77
125	125	125	45	95
150	150	150	50	109
200	200	200	55	148
250	250	250	68	184

Thickness: 0.05, 0.1, 0.2, 0.25, 0.4, 0.5, 0.7, 1, 2, 3, 4.5, 6, 8, 10 mm

Laser and Waterjet cutting??



## Shim Kits and Cases



Supplied in the tough Pelican™ protector case - designed with an automatic pressure equalization valve, a watertight silicone O-ring lid, comfortable over-moulded rubber handles, stainless steel hardware and padlock protectors. They are watertight, crushproof, and dustproof and their simple strong double-through latches keep the lid closed in the roughest handling.

Each kit contains its own unique set of shims nested perfectly into clearly marked slots, ensuring fast and accurate availability when needed on site.

\*\* Refill by purchasing individual shim packs.