



SHIM KITS



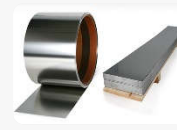
PRE-CUT SHIM



AXIAL SHIM



CUSTOM SHIM



SHIM STOCK



LIGHTS

SUBJECT: SHIM KIT E 90

The above mentioned shim case contains its own unique set of shims nested perfectly into clearly marked slots, ensuring fast and accurate availability when needed on site.

Refill by purchasing individual shim packs as needed.

GENERAL:

- Waterproof, crush-proof and dust-proof
- Easy open double throw latches
- Overlapping interlocking lid eliminates any distorting, mismatching and contributes to an overall sturdier case
- Molded-in padlock holes

DIMENSIONS:

- Interior (L x W x D): 26.0 cm x 17.0 cm x 22.0 cm
- Exterior (L x W x D): 28.6 cm x 22.3cm x 26.4 cm
- Shipping (L x W x D): 29.5 cm x 24 cm 28.5 cm

MATERIALS:

- PP (Polypropylene) and GF (Glass fiber).
- Waterproof, crush-proof and dust-proof.
- The strong latches and hinges guarantee a secure closure even under severe conditions.
- Strong handles provide good grip and great comfort. These handles are tough and almost unbreakable.
- The special air-valves allows air-seal the case. It also can be used to create a pressure balance inside the case.

* The E 90 case is available in black only and fitted with a durable foam inner to fit all sizes with clearly marked slots and contains the following shim combinations:

* Shim sizes 200;

of the following thicknesses;

0.05; 0.1; 0.2; 0.25; 0.4; 0.5; 0.7; 1.0mm - 10 EACH

2.0 and 3.0mm - 5 EACH

* Complete kit contains 90 shims.

* Weight of full kit: 16.6kg