

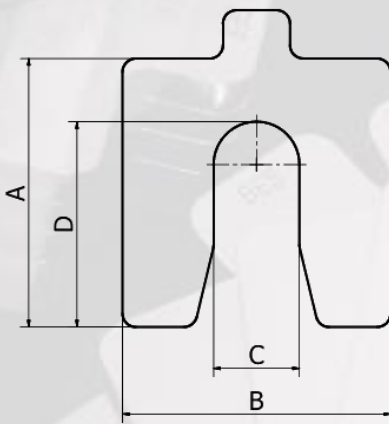


Budget Engineering Services CC

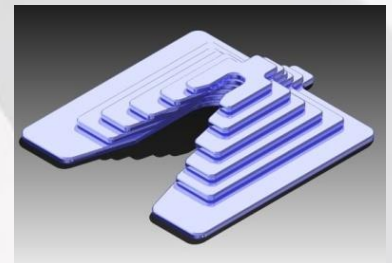
Manufacturing of pre cut shim since 2002

Pre-cut, slotted shims in metric

An essential part of any professional alignment and leveling task. They're accurate and easy to use. Manufactured from 300 series stainless steel. Each shim de-burred and permanently marked (etched) with thickness. No costly material wastage. No time consuming hand-cutting. No sharp edges. Neatly packaged in flip-open, carton box (packet of 10 each). Standard thickness ex-stock.



| mm | A | B | C | D |
|-----|-----|-----|----|-----|
| 50 | 50 | 50 | 16 | 39 |
| 75 | 75 | 75 | 22 | 55 |
| 100 | 100 | 100 | 32 | 77 |
| 125 | 125 | 125 | 45 | 95 |
| 150 | 150 | 150 | 50 | 109 |
| 200 | 200 | 200 | 55 | 148 |
| 250 | 250 | 250 | 68 | 184 |



Thickness: 0.05, 0.1, 0.2, 0.25, 0.4, 0.5, 0.7, 1, 2, 3, 4.5, 6, 8, 10 mm

Shim Kits and Cases

Supplied in tough Pelican™ protector cases. They are watertight, crushproof, and dustproof and their simple strong double-through latches keep the lid closed in the roughest handling. Each kit contains its own unique set of shims nested perfectly into clearly marked slots, ensuring fast and accurate availability when needed on site.



** Refill by purchasing individual shim packs.