



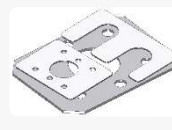
SHIM KITS



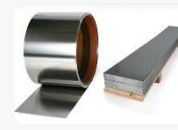
PRE-CUT SHIM



AXIAL SHIM



CUSTOM SHIM



SHIM STOCK



LIGHTS

SUBJECT: BES SHIM KIT CD 340

The above mentioned shim case contains its own unique set of shims nested perfectly into clearly marked slots, ensuring fast and accurate availability when needed on site.

The CD 340 kit is available in black only and fitted with a durable foam inner to fit all sizes with clearly marked slots and contains the following shim combinations:

- Shim sizes 100 and 125:
of the following thicknesses;
0.05; 0.1; 0.2; 0.25; 0.4; 0.5; 0.7; 1.0mm - 20 each
2.0mm - 10 each
- Complete kit contains 340 shims.
- Weight of full kit: 16.3kg

Refill by purchasing individual shim packs as needed.

GENERAL:

- Watertight, crushproof, and dustproof
- Easy open Double Throw latches
- Open cell core with solid wall design - strong, light weight
- O-ring seal - Automatic Pressure Equalization Valve - balances interior pressure, keeps water out
- Comfortable rubber over-moulded handle
- Stainless steel hardware and padlock protectors

DIMENSIONS:

- Interior (L x W x D): 37.6 cm x 26.3 cm x 15.2 cm
- Exterior (L x W x D): 40.6 cm x 33 cm x 17.4 cm
- Shipping (L x W x D): 43 cm x 35.5 cm x 18.5 cm

MATERIALS:

- Body: Polypropylene
- Latch: ABS
- O-Ring: Polymer
- Pins: Stainless Steel
- Foam: 1.3 lb Polyurethane
- Purge Body: ABS
- Purge Vent: 3 Micron Hydrophobic Non-Woven
- Purge O-Ring: 70 Shore Nitrile

