



SHIM KITS



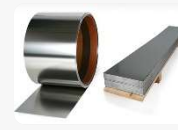
PRE-CUT SHIM



AXIAL SHIM



CUSTOM SHIM



SHIM STOCK



LIGHTS

SUBJECT: BES SHIM KIT E 90

The above mentioned shim case contains its own unique set of shims nested perfectly into clearly marked slots, ensuring fast and accurate availability when needed on site.

The E 90 kit is available in black only and fitted with a durable foam inner to fit all sizes with clearly marked slots and contains the following shim combinations:

- Shim sizes 200:
of the following thicknesses;
0.05; 0.1; 0.2; 0.25; 0.4; 0.5; 0.7; 1.0mm - 10 each
2.0 and 3.0mm - 5 each
- Complete kit contains 90 shims.
- Weight of full kit: 16.6kg

Refill by purchasing individual shim packs as needed.

GENERAL:

- Waterproof, crush-proof and dust-proof
- Easy open double throw latches
- Overlapping interlocking lid eliminates any distorting, mismatching and contributes to an overall sturdier case
- Molded-in padlock holes

DIMENSIONS:

- Interior (L x W x D): 26.0 cm x 17.0 cm x 22.0 cm
- Exterior (L x W x D): 28.6 cm x 22.3cm x 26.4 cm
- Shipping (L x W x D): 29.5 cm x 24 cm 28.5 cm

MATERIALS:

- PP (Polypropylene) and GF (Glass fiber).
- Waterproof, crush-proof and dust-proof.
- The strong latches and hinges guarantee a secure closure even under severe conditions.
- Strong handles provide good grip and great comfort. These handles are tough and almost unbreakable.
- The special air-valves allows air-seal the case. It also can be used to create a pressure balance inside the case.

