



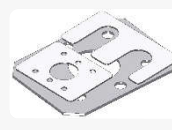
SHIM KITS



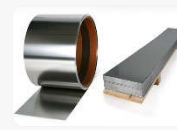
PRE-CUT SHIM



AXIAL SHIM



CUSTOM SHIM



SHIM STOCK



LIGHTS

SUBJECT: BES SHIM KIT BCD 360 L

The above mentioned shim case contains its own unique set of shims nested perfectly into clearly marked slots, ensuring fast and accurate availability when needed on site.

The BCD 360 L kit is available in black only and fitted with a durable foam inner to fit all sizes with clearly marked slots and contains the following shim combinations:

- Shim sizes 75, 100 and 125:
of the following thicknesses: 0.05; 0.1; 0.2; 0.5; 0.7; 1.0mm - 20 each
- Complete kit contains 360 shims.
- Weight of full kit: 13kg

Refill by purchasing individual shim packs as needed.

GENERAL:

- Watertight, crushproof, and dustproof
- Easy open Double Throw latches
- Open cell core with solid wall design - strong, light weight
- O-ring seal - Automatic Pressure Equalization Valve - balances interior pressure, keeps water out
- Comfortable rubber over-moulded handle
- Stainless steel hardware and padlock protectors

DIMENSIONS:

- Interior (L x W x D): 37.6 cm x 26.3 cm x 15.2 cm
- Exterior (L x W x D): 40.6 cm x 33 cm x 17.4 cm
- Shipping (L x W x D): 43 cm x 35.5 cm x 18.5 cm

MATERIALS:

- Body: Polypropylene
- Latch: ABS
- O-Ring: Polymer
- Pins: Stainless Steel
- Foam: 1.3 lb Polyurethane
- Purge Body: ABS
- Purge Vent: 3 Micron Hydrophobic Non-Woven
- Purge O-Ring: 70 Shore Nitrile

